



# Basketball Product Guide

The **One** - It's **Original** Concept and Your **Only** One



---

INDEX

---

2	Introduction
3-4	Backstop Lineup
5-8	FIBA Approved Backstop
9-13	Other Backstop
14-15	Backboard / Ring
16	Luminous Frame / Shot Clock
17	Scoreboard
18	Foul Indicator
19	Miscellaneous Goods
20	Electric System Connection

---

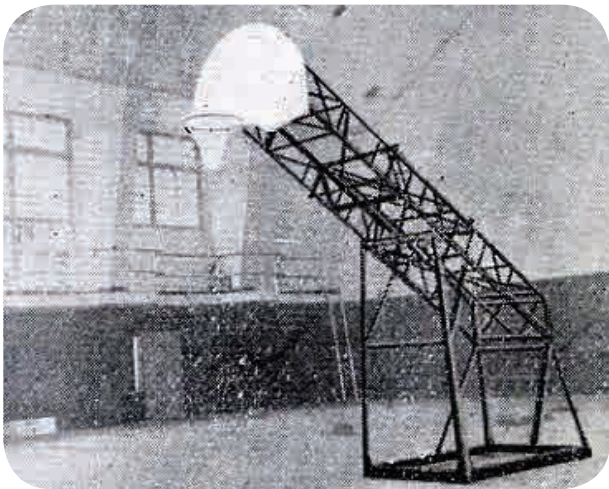
# The Best **Quality** for Your Best Performance

Senoh's Basketball Expertise is cultivated from its history since 1955

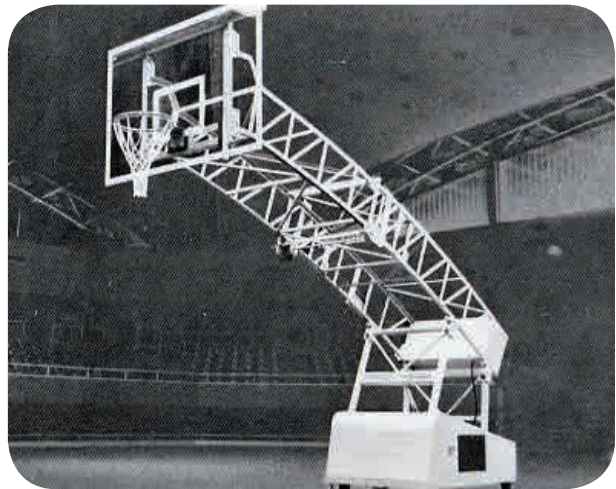
Senoh's basketball equipment is all made in Japan.

Various sized backstops with the highest standards are available and the products lineup can fulfill a wide range of requirements for stadium, gymnasium, school, and park.

Senoh is proud of providing customers with the best quality that are absolutely safe and have a long life.



1955



1962

Mexico Olympic Model



1982



2007

FIBA World Championship Model

# Backstop Lineup

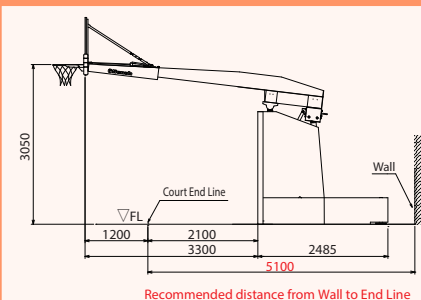


FIBA, the world governing body for basketball, is an independent association formed by 5 FIBA Zones and 213 National federations of basketball. Recognized as the competent authority in basketball by the International Olympic Committee (IOC). Senoh has been the approved partner of FIBA for backboard support units since 1998.

Level 1	FIBA National Team and Club Competitions plus other elite level international club and national team competitions
Level 2	Any other competition not included in Level 1

## DA0950 Orange Goal G

### Electric Actuator Drive System

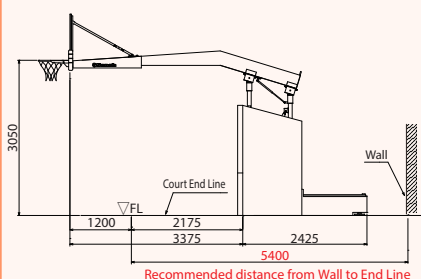


- FIBA approved ( Level 1 & 2 )
- 1460kg
- W1900 x L6420 x H3950mm ( body W1447mm )
- W1900 x L5300 x H1690mm ( when folded )
- Court line to the wall: 5100mm

► See P.5

## DA0955 Spring Goal G

### Counter-weight spring drive system

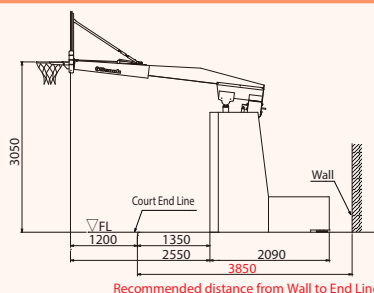


- FIBA approved ( Level 1 & 2 )
- 1350kg
- W1900 x L6420 x H3950mm ( body W1567mm )
- W1900 x L5136 x H1950mm ( when folded )
- Court line to the wall: 5400mm

► See P.6

## DA0665 Orange Goal

### Electric Actuator Drive System

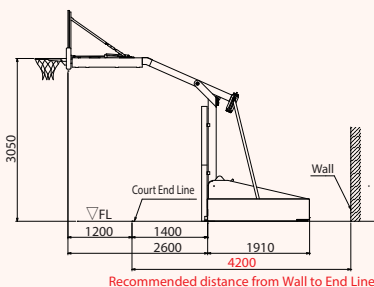


- FIBA approved ( Level 2 )
- 1200kg
- W1900 x L5260 x H3950mm ( body W1087mm )
- W1900 x L4028 x H1870mm ( when folded )
- Court line to the wall: 3850mm

► See P.7

## DA0331 Spring Goal

### Counter-weight spring drive system



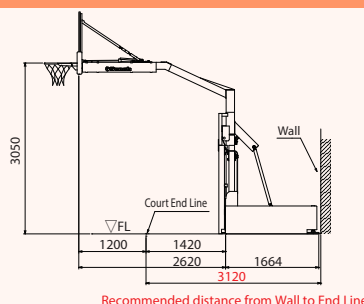
- FIBA approved ( Level 2 )
- 1030kg
- W1900 x L5130 x H3950mm ( body W1110mm )
- W1900 x L3885 x H1900mm ( when folded )
- Court line to the wall: 4200mm

► See P.8



## DA0711 Parallel Goal 21

## Electric Actuator Drive System

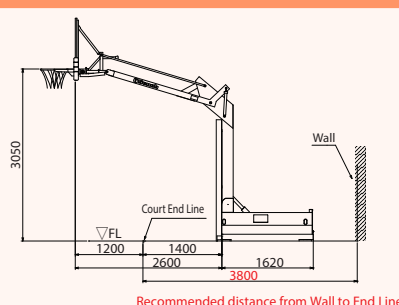


- 1380kg
- W1900 x L4904 x H3950mm (body W1084mm)
- W1900 x L4005 x H1944mm (when folded)
- Court line to the wall: 3120mm

► See P.9

## DA0841 Parallel Goal

## Electric Actuator Drive System

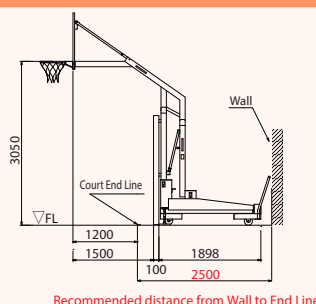


- 1000kg
- W1900 x L4840 x H3950mm (body W1110mm)
- W1900 x L2912 x H2143mm (when folded)
- Court line to the wall: 3800mm

► See P.10

## DD0701 Spring Goal S

## Counter-weight spring drive system

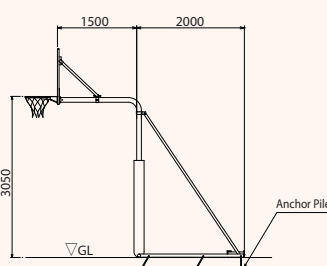


- 520kg
- W1900 x L6420 x H3950mm (body 1447mm)
- W1900 x L3086 x H1903mm (when folded)
- Court line to the wall: 2500mm

► See P.11

## DD0541 Outdoor Basket Goal

## Outdoor



- 470kg
- W1800 x L6420 x H3950mm

► See P.11

## DC09 Wall Mounted Goal (foldable type)

## DBXXXX Wall Mounted Goal (fixed type)

## DAXXXX Ceiling Suspended Goal



FIBA Approved (Level2)



► See P.13

► See P.13

► See P.13

## FIBA Approved Backstop



DA095001

Backstop "Orange Goal G"

FIBA approved ( Level 1 & 2 )

Electric actuator drive system

Heavy duty steel frame construction

Clear reinforced glass made backboard with safety pads on lower edge

Orange enameled pressure-release rings with nets

Body protecting cushion padding

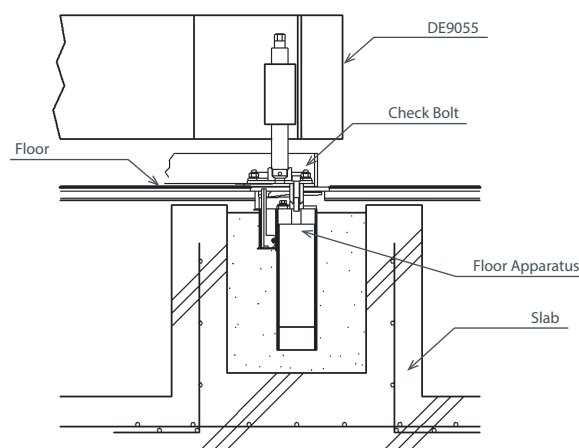
Available in mini-basketball height

With setting gauge, With caster

H3950 x L6420 x W1900mm ( body W1447mm )  
H1690 x L5300 x W1900mm ( when folded )

1460kg / unit

AC100V 550VA ( voltage adjusted as per request )



DA090M11 Floor Apparatus for DA0950

Anchor socket  $\Phi 77\text{mm} \times \text{D}350\text{mm}$

Top plate L146xW170mm

A set of 4 pcs for 1 backstop unit



## DA095501 Backstop “Spring Goal G”

FIBA approved (Level 1 & 2)

Counter-weight spring drive system, manual type

Heavy duty steel frame construction

Clear reinforced glass made backboard with safety pads on lower edge

Orange enameled pressure-release rings with nets

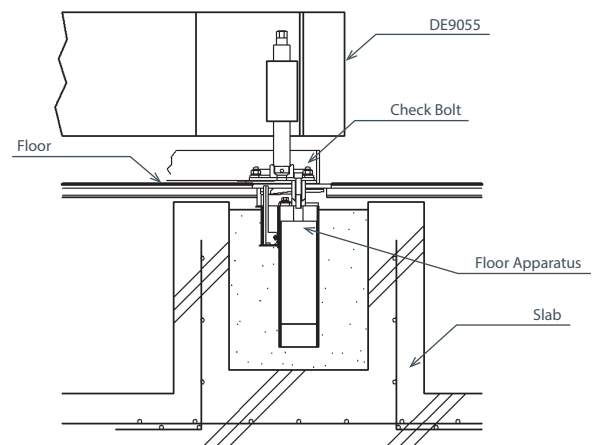
Body protecting cushion padding

Available in mini-basketball height

With setting gauge , With caster

H3950 x L6420 x W1900mm (body W1567mm)  
H1950 x L5136 x W1900mm (when folding)

1350kg / unit



## DA090M42 Floor Apparatus for DA0955

Anchor socket  $\Phi 77\text{mm} \times \text{D}350\text{mm}$

Top plate L146xW170mm

A set of 4 pcs for 1 backstop unit

## FIBA Approved Backstop



### DA066503 Backstop "Orange Goal"

FIBA approved ( Level 2 )

Electric actuator drive system

Heavy duty steel frame construction

Clear plastic made backboard with safety pads on lower edge

Orange enameled pressure-release rings with nets

Body protecting cushion padding

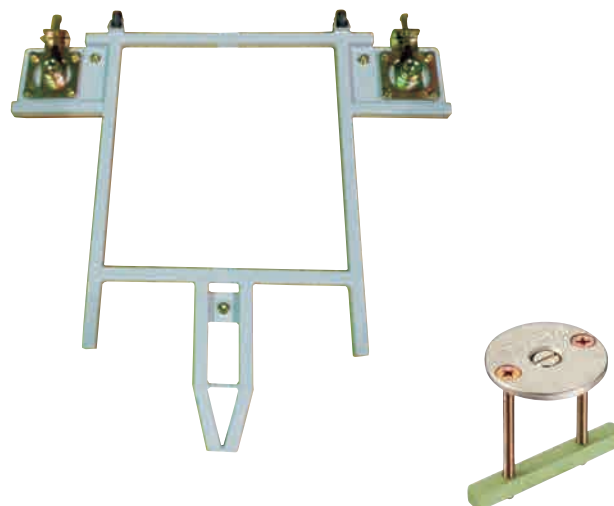
Available in mini-basketball height

With caster

H3950 x L5260 x W1900mm (body W1087mm)  
H1870 x L4028 x W1900mm (when folded)

1200kg / unit

AC100V 550VA (voltage adjusted as per request)



### DA060004 Setting Gauge for DA0665

W1140 x L950 x H45mm

22kg / unit

A set of 2 pcs for 1 pair of backstop unit





**DA033103**  
**Backstop "Spring Goal"**

FIBA approved (Level 2)

Counter-weight spring drive system, manual type

Heavy duty steel frame construction

Clear plastic made backboard with safety pads on lower edge

Orange enameled pressure-release rings with nets

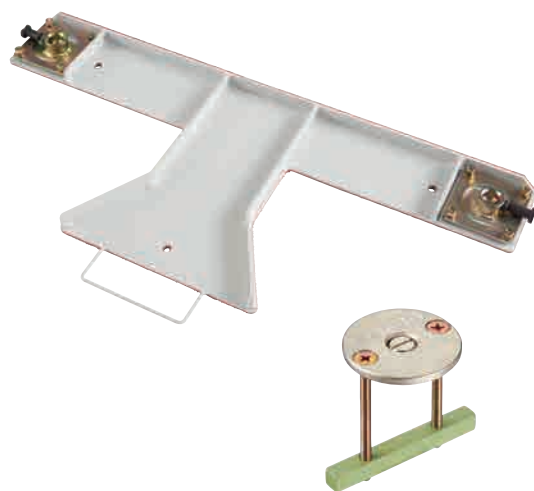
Body protecting cushion padding

Available in mini-basketball height

With caster

H3950 x L5130 x W1900mm (body W1110mm)  
H1900 x L3885 x W1900mm (when folded)

1030kg / unit



**DA030002 Setting Gauge for DA0331**

W110 x L480 x H70mm

23kg / unit

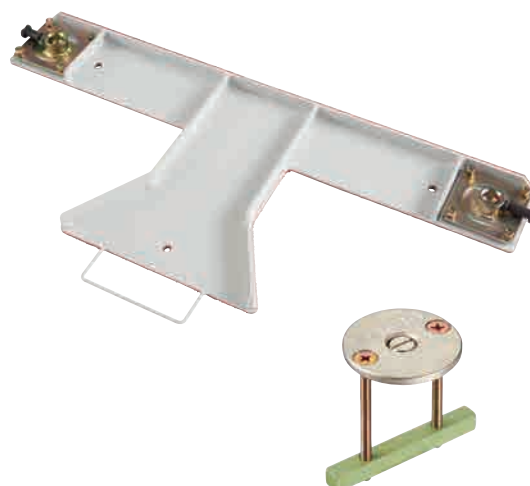
A set of 2 pcs for 1 pair of backstop unit

## Other Backstops



### DA071103 Backstop "Parallel Goal 21"

Electric actuator drive system
Heavy duty steel frame construction
Clear plastic made backboard with safety pads on lower edge
Orange enameled pressure-release rings with nets
Body protecting cushion padding
Available in mini-basketball height
With caster
H3950 x L4904x W1900mm (body W1084mm) H1944 x L4005 x W1900mm (when folded)
1380kg / unit
AC100V 550VA (voltage adjusted as per request)

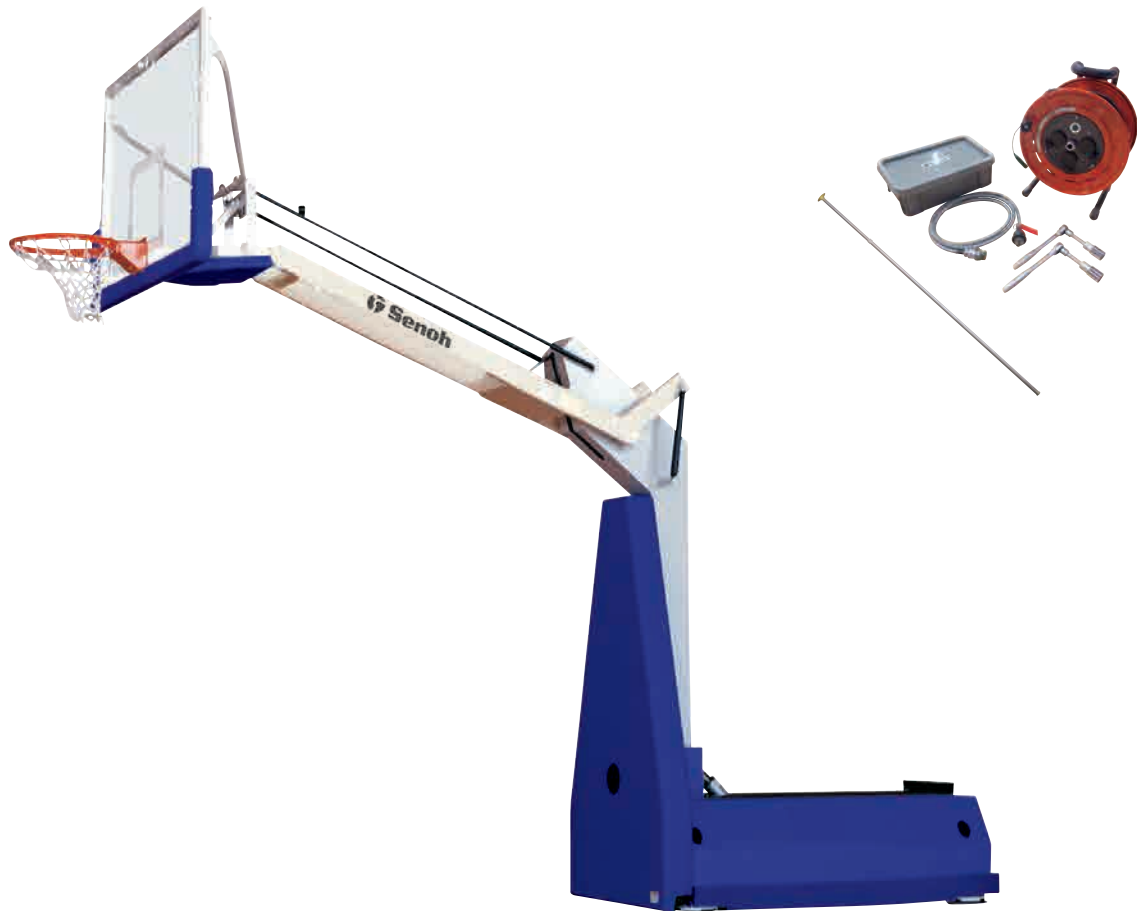


### DA070001 Setting Gauge for DA0711

W110 x L480 x H70mm

23kg / unit

A set of 2 pcs for 1 pair of backstop unit



### DA084103 Backstop "Parallel Goal"

Electric actuator drive system

Heavy duty steel frame construction

Clear plastic made backboard with safety pads on lower edge

Orange enameled pressure-release rings with nets

Body protecting cushion padding

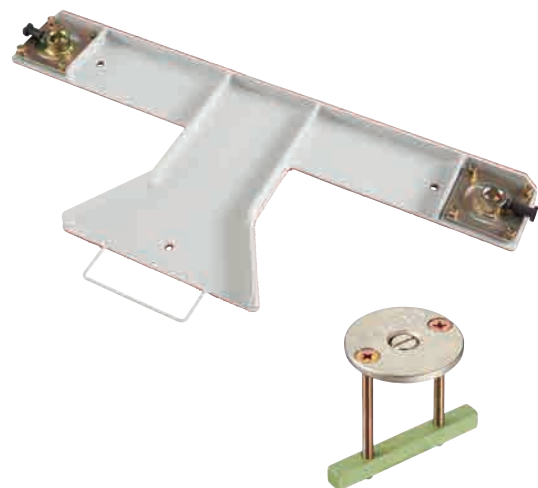
Available in mini-basketball height

With caster

H3950 x L4840 x W1900mm (body W1110mm)  
H2143 x L2912 x W1900mm (when folded)

1000kg / unit

AC100V 550VA (voltage adjusted as per request)



### DA080001 Setting Gauge for DA0841

W110 x L480 x H70mm

23kg / unit

A set of 2 pcs for 1 pair of backstop unit

## Other Backstops



### DD0701 Backstop "Spring Goal S"

Counter-weight spring drive system, manual type

Heavy duty steel frame construction

Clear plastic made backboard with safety pads on lower edge with ring and net

Body protecting cushion padding

With caster

H3950 x L4118 x W1900mm ( body W1060mm )  
H1903 x L3086 x W1900mm ( when folded )

560kg / unit

Court line to the wall : 2500mm



### DD0541 Backstop "Outdoor Goal"

For outdoor

Pickets setting up

FRP backboard with ring and net

Single post with padding

H3950 x L4120 x W1800mm

470kg / unit

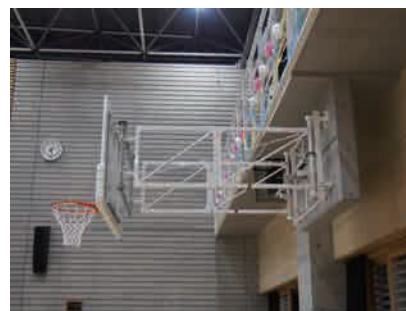
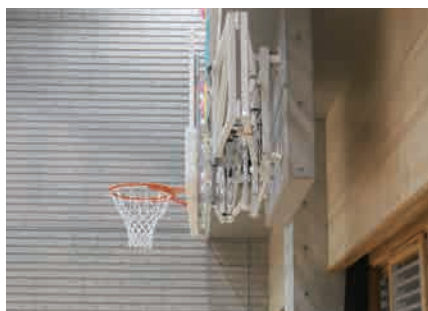
# CLUB REGOAL

Custom made Backstop unit

Various color and design with wide range of possibilities.







### DC09 Wall Mounted Goal

FIBA approved ( Level 2 )

Attached to the wall

Foldable by remote control or crank handle

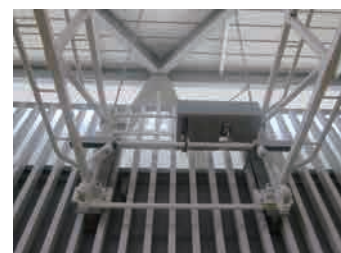
Clear plastic made backboard with safety pads on lower edge

Orange enameled pressure-release rings with nets

Adjustable in both horizontal and vertical leveling



Manual operation by crank handle



Motor operation



Remote



Wall panel

### DBXXXXXX Wall Mounted Goal

Fixed to the wall



### DAXXXXXX Ceiling Suspended Goal

Hanged from ceiling

Remote control or manual chain system



### ■ Remarks ( Structure Requirement )

- Secure fixings to the overhead roof structure are required. Additional steel works may need to be incorporated during the construction of the building.
- All loadings to be approved by structure engineer.
- All wall fixings to be drawn upon the assumption that the walls are of a load base material unless otherwise informed.



### DA100Q50 Glass Backboard

For Orange Goal G & Spring Goal G

Reinforced glass made

Safety pad on lower edge

1800 x 1050mm, 94kg



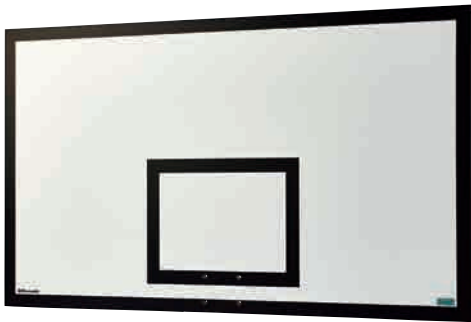
### DA090M14 Plastic Backboard

For Orange Goal, Spring Goal, etc.

Clear plastic made

Safety pad on lower edge

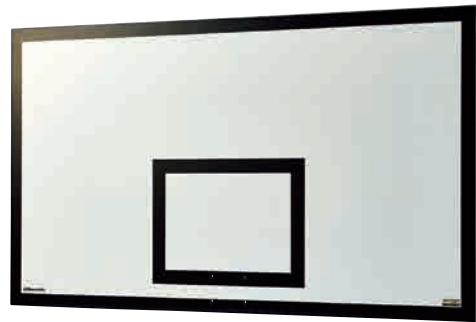
1800 x 1050mm, 46kg



### DA100N71 Honeycomb Flush Backboard

Honeycomb flush board

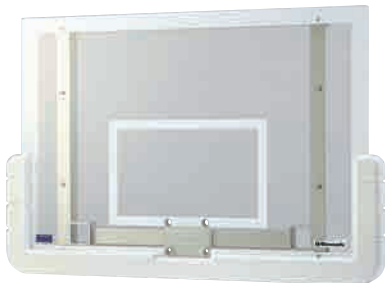
1800 x 1050mm, 16kg



### DA100N72 FRP Backboard

FRP is overlaid on plywood board

1800 x 1050mm, 30kg

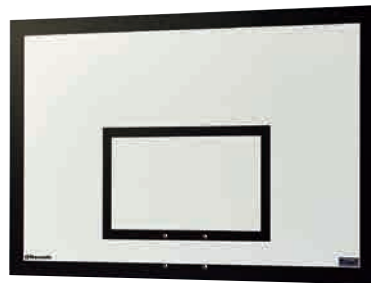


### DA100Q38 Plastic Backboard

For mini basketball

Clear plastic made

1200 x 800mm, 28kg



### DA100Q37 Honeycomb Flush Backboard

For mini basketball

Honeycomb flush board

1200 x 800mm, 10kg



### DA100R23 Ring & Net

Pressure-release ring with net

Orange enameled

Internal Diameter : 450mm



DA100N74 Ring & Net

Fixed ring with net

Orange enameled

Internal Diameter : 450mm

For Wooden Backboard



DA100N75 Ring & Net

Fixed ring with net

Orange enameled

Internal Diameter : 450mm

For Plastic Backboard



DA9502 Ring & Net

Ring net

Polyester made

Knotless



DA100M45 Ring net

Ring net

Vinylon fiber made



DA100R23 Ring & Net

Ring net

Polyester made



DS4512 Luminous Frame ( for Plastic Backboard )  
DS4513 Luminous Frame ( for Glass Backboard )

Attached to behind of backboard

LED with diffusible acrylic panel

W33mm, total length 4987mm

Control board: W230 x D260 x F80mm, 2.5kg

Power cord 2m x 1, signal cord 50m x 1, interlocking cord 2m x 1

AC100V 60W ( voltage adjusted as per request )

Interlocked with Shot clock( DS2873/DS2874 ) Available

\* Japanese market only



DS2883 Shot Clock ( for DA0952/DA0665 )  
DS2884 Shot Clock with Game Clock ( for DA0957 )

Shot clock switchable 12, 14 or 24 sec.

Game clock time max 99 min. 59 sec.

1/10 sec. is indicated for last 60 sec.

Buzzer and flash at time over

Power cord 3m x 1, signal cord 50m x 2

Display: W592 x T128 x H632mm, 9kg/unit

Control board: W300 x D280 x H110mm, 4.5kg/unit

AC100V 18W ( voltage adjusted as per request )

\* Japanese market only



DS3452 Shot Clock ( for DA0952/DA0665 )  
DS3454 Shot Clock ( for DA0957 )  
DS3451 Shot Clock ( for DA0331/DA0713 )  
DS3370 Shot Clock ( for DA0841 )

Shot clock switchable 12, 24 or 30 sec.

Power cord 3m x 1, signal cord 40m x 2

Display: W470 x T57 x H425mm, 4.2g/unit

Control board: W150 x D200 x H85mm, 1.8kg/unit

AC100V 50W ( voltage adjusted as per request )

\* Japanese market only



DS3240 Shot Clock Stand

Power cord 3m x 1, signal cord 40m x 2

W550 x D555 x H970mm, 10kg/unit

Display: W470 x T57 x H425mm

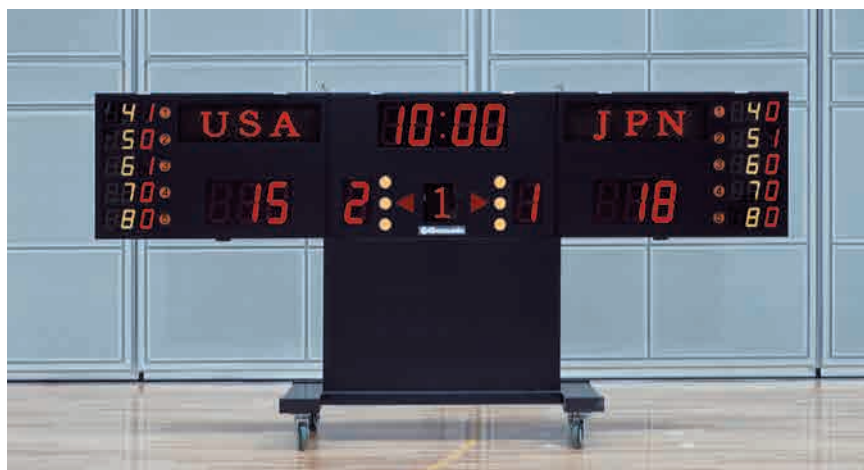
Control board: W150 x D200 x H85mm, 2kg/unit

AC100V 100W ( voltage adjusted as per request )

\* Japanese market only



## Scoreboard



Time  
Control  
Board



Score  
Control  
Board



Laptop



### DS7000 Electric Scoreboard

International competition level

Numbers : LED 7 segment, Teams : 24 x 96 dot LED

Indicates team, time, scores, fouls of team and individuals, and set counts

Set of 2 scoreboards with 1 time control board, 1 score control board, 1 computer for team and foul input

Power cord 5m x 1 for control board, 20m x 2 for display, signal cord 50m x 2

W3820 x D910 x H1900mm, 250kg/unit

Display : W3820 x D170 x H800mm

AC100V 600W (voltage adjusted as per request)

\* Japanese market only



### DS0140 Manual Scoreboard

for Basketball and Volleyball

Back board for free writing

Set : 1-5, Score : 0-199

Water-proof score canvas H420 x W180mm

W1525 x D658 x H1805mm, 23kg/unit



### DS2220 Electric Scoreboard

Set of 1 scoreboard and 1 control board

LED 7 segment

Magnet board for team name indication

Power cord 20m x 1, signal cord 50m x 1

W1100 x D670 x H1870 mm, 45kg/unit

Display : W1100 x D120 x H500mm

Control board : W280 x D300 x H100mm, 3kg/unit

AC100V 300W (voltage adjusted as per request)

\* Japanese market only



## Foul Indicator



### DS3070 Foul Indicator Stand

Foul indicators for individual and team
With team foul indication lamp at top
Set of 2 indicators and 1 control board
LED 7-segment with 3 face-display
Power cord 20m x1, signal cord 10m x2
W800 x D800 x H1920 mm, 23kg/unit
Control board : W300 x D250 x H120mm, 3kg/unit
AC100V 200W (voltage adjusted as per request)

\* Japanese market only

### DS3511 Foul Indicators on Desk

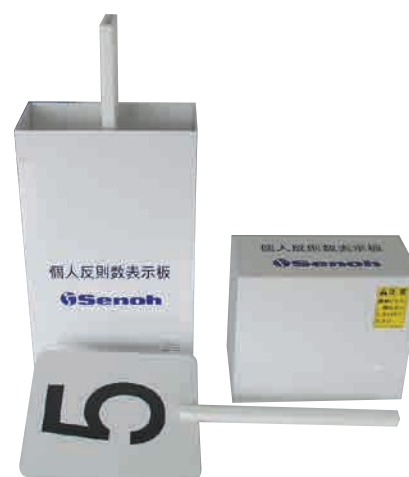
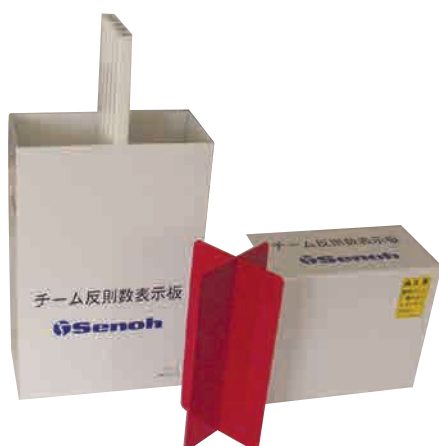
Foul indicators for individual and team
With team foul indication lamp at top
Set of 2 indicators and 1 control board
LED 7-segment with 3 face-display
Power cord 3m x 1, signal cord 2m x 2
Φ210 x H385 mm, 12kg/unit
Control board : W300 x D220 x H90mm, 3kg/unit
AC100V 120W (voltage adjusted as per request)

\* Japanese market only

### DS3510 Foul Indicators on Desk

Foul indicators for individual and Team
With team foul indication lamp at top
Set of 2 indicators and 1 control board
LED 7-segment with 3 face-display
Power cord 3m x 1, signal cord 2m x 2
Φ210 x H440mm, 6kg/unit
Control board : W220 x D150 x H100mm, 2kg/unit
AC100V 100W (voltage adjusted as per request)

\* Japanese market only



### DS5040 Foul Indicator (for Team)

5 plates in box
Box : W278 x D143 x H572mm
Polyvinyl made

### DS5120 Foul Indicator (for Individual)

5 plates in box
Box : W278 x D143 x H572mm
Polyvinyl made

## Miscellaneous Goods



### DS310001 Loud Sound Buzzer

For competitions

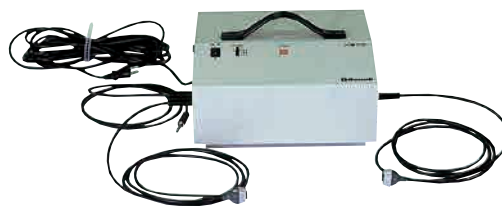
Sound with 3 types of tones

Power cord 6.5m x 1, signal cord 2m x 1

W390 x D274 x H206mm, 8kg

AC100V 150W (voltage adjusted as per request)

\* Japanese market only



### DS370001 Loud Sound Buzzer

For school (education)

Sound with 3 types of tones

Power cord 6 m x 1, signal cord 2m x 2 for each team

W290 x D260 x H130mm, 6kg

AC100V 120W

\* Japanese market only



### DS4600 Alternating Possession Indicator

W420 x D190 x H120mm, 3.5kg

AC100V 60W (voltage adjusted as per request)

\* Japanese market only



### DS6020 Official Table

W3022 x D711 x H850mm, 106kg

DS4600 included



### DK0600 Ball Cage

For 21basket balls (42 volley balls)

L875 x D650 x H670mm

L875 x D650 x H125mm when folded

15kg



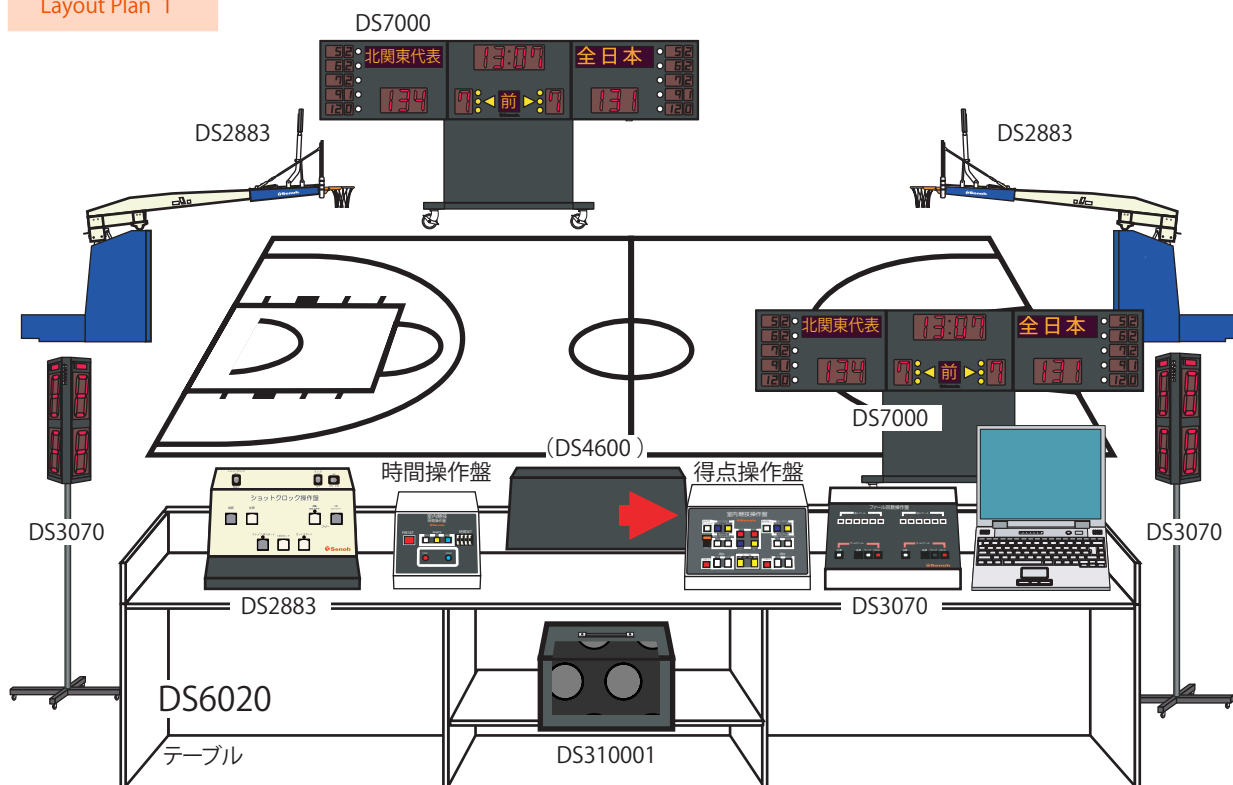
### DZ9101 Net Height Measurer

Aluminum made

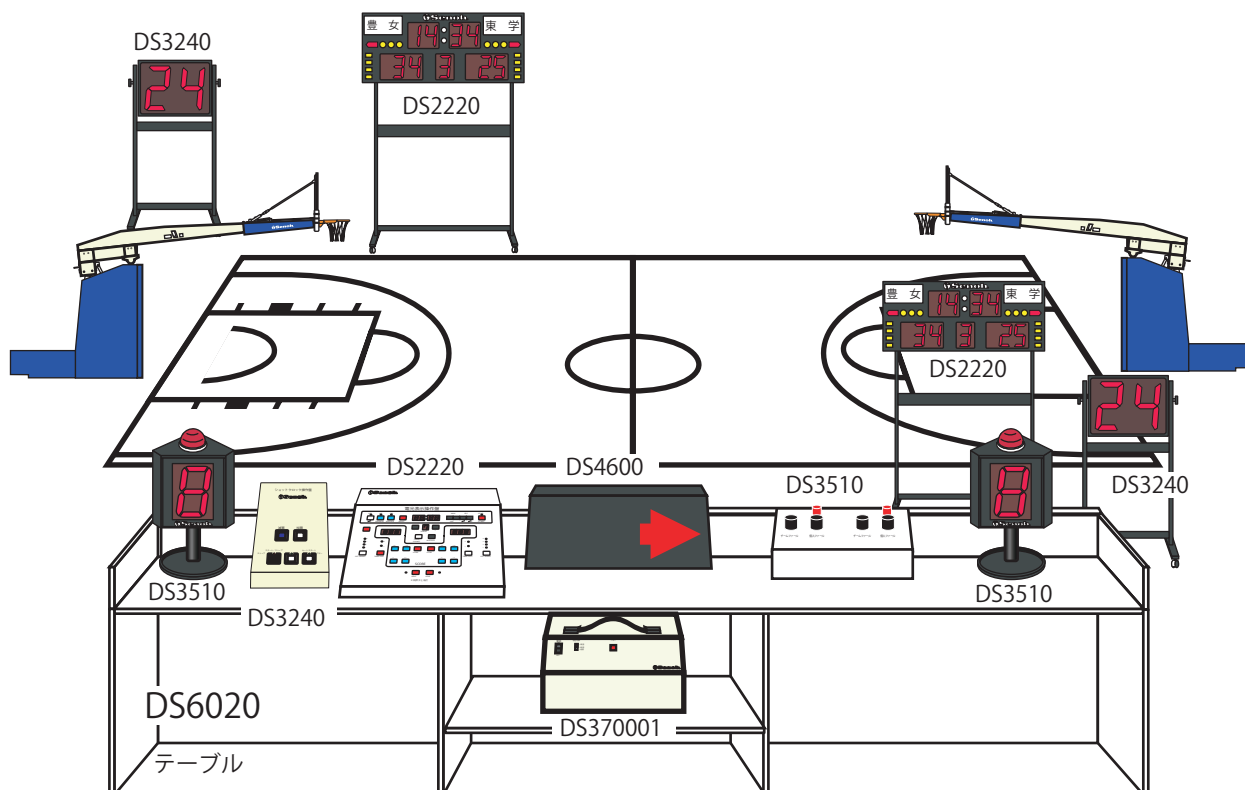
Measurement range 914-3050mm

3kg

Layout Plan 1



Layout Plan 2





**SENOH Corporation**

250 Matsuhidai, Matsudo-shi, Chiba 270-2214, Japan

TEL : 81-47-386-5807      Email : [intl-1@senoh.co.jp](mailto:intl-1@senoh.co.jp)

<http://www.senoh.jp>

---